

Urinal Sense Flush Valve – Concealed Box

PRODUCT FEATURES

- Automatic infra-red sensor activation urinal flush valve
- Piston valve with build-in stainless steel strainer for screening out the debris and self-cleaning solenoid
- Electrical sensor is isolated and sealed in waterproof compartment
- Manual override button incorporated
- Flush every 24 hours of inactivity (optional)

PRODUCT SPECIFICATIONS

- Dimension : 139(L) x 139(W) mm
- Material : Brass casting flush valve with stainless steel satin finish panel
- Power Supply : 220-240VAC 50/60Hz
- Water Supply : G1/2"
- Detection Time : 6 seconds
- Detection range : 800mm (Default)
- Operating Temperature : 0-40°C
- Supply Pressure : 100kPa (flowing) – 800 kPa



Optional features :



Manual Overriding



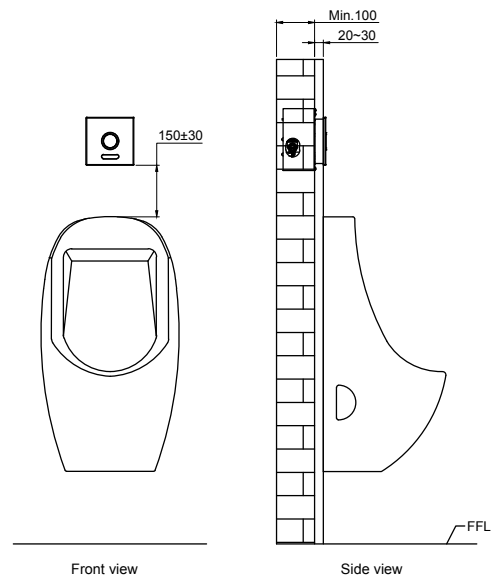
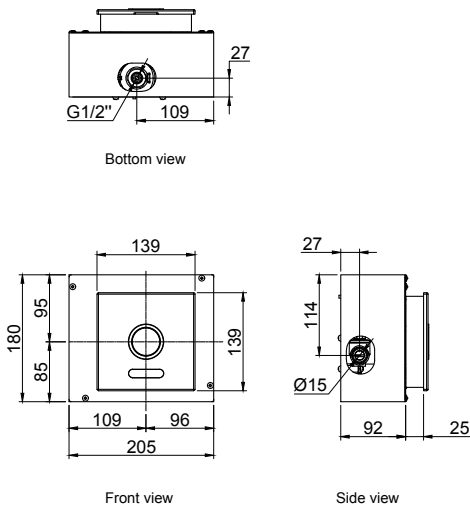
Hold-Flow Flushing



RC1000e Remote Control

TECHNICAL DRAWING

INSTALLATION DETAILS



*150±30 - From bottom edge panel to urinal bowl top surface.
*Min. 100 - Brick wall
20-30 - Finished wall

All dimensions are in mm.
*Denotes recommended value.